

Evaporative humidifier

Airbi EVO ^{WiFi}



Instruction manual

(version 1.0)



1 Before first use

1.1 Why humidify the air?

Stay in heated rooms can be not only unpleasant, but also insanitary. One of the main reason is low humidity. Optimal humidity is between 40% and 60%, while in many of our homes in winter humidity drops below 20%.

What does low humidity causes? Dust particles, bacteria, viruses, dust mite feces are collected by nasal mucosa are exhaled back in normal state, but due to dry air these particles get into the lungs and reduce natural defense. This actions overload the immune system and irritate the mucous membranes, cough, cracked lips and it is very close to any kind of disease.

Airbi evaporative humidifiers are ideal for apartments, offices, everywhere where low humidity can cause health problems for people. Unlike other types of humidifiers (eg ultrasonic), escaping water vapor is not visible from the device when using an evaporative humidifier. The biggest advantage of the evaporative humidifiers is high performance together with low energy consumption and non-dispersion of minerals from water into the air.

1.2 Principle of evaporative humidifier

Evaporative humidifiers work on the principle of natural evaporation. We all know that if we place a bowl of water in a room, the water will evaporate over time and the room will be wetter. Evaporative humidifiers accelerate the natural process of water evaporation by means of a fan and a wick filter. The fan in the humidifier sucks in air and blows it through the water filter. The water in the filter then evaporates and turns into water vapor. This process increases the relative humidity in the room.

1.3 Security instructions

- Always read the user guide instructions carefully before using the device.
- Keep this User's Manual for future reference.
- After unpacking, make sure that humidifier wasn't damaged during transport. If you find any damage, contact your dealer as soon as possible. We recommend you keep the packaging for possible future use .
- Before first use check that the device parameters (electric voltage, etc.) correspond to local conditions.
- Always put the humidifier on a hard, flat horizontal surface, at least 15 cm from the walls and away from any source of heat such as burners, radiators etc. We do not recommend using the humidifier on wooden furniture or the floor, as there is a risk of the container tipping over and water leaking out of the appliance. Water vapor may liquefy around the unit.
- Keep the humidifier out of reach of children. Do not permit children to play with it.
- Before using the humidifier, unwind the cord and check if it is not damaged. Do not use it if the cord is damaged.
- Do not plug or unplug the humidifier with wet hands.
- Never disassemble the basic unit.

- Never operate the humidifier with a defective plug or cord, or after a breakdown or damage of any kind. In these cases, return the appliance to the nearest approved dealer/repairer for verification and any necessary repairs or adjustments.
- Do not use additives such as perfumes, essences, etc.
- Never add water to the humidifier with a temperature higher than 40 ° C.
- Do not shake the humidifier. This could spill water into the base unit and affect its operation.
- Do not leave the humidifier in the sun for a long period.
- If an unusual odour occurs during normal use, turn off the appliance, unplug it and have it verified by qualified personnel.
- Unplug the humidifier before cleaning or if replacing the filter.
- Never touch the water or the immersed components when the appliance is in operation.
- Never turn on the humidifier when there is no water in the tank.
- To prevent any damage to the appliance, make sure that no water enters the top of the appliance.
- Never wash the entire unit with water; do not immerse it.
- The humidifier should be cleaned regularly. To do this, refer to the cleaning instructions in this manual and respect them.
- Do not use the humidifier if the air in the room is already sufficiently moist (more than 50% relative humidity). Excessive humidity gives rise to condensation on cold surfaces or walls in the room.
- Never cover the humidifier during operation.
- Device is only for indoor use.
- This device is not intended for use by persons (including children) with reduced physical, sensory or mental capabilities or lack of experience and knowledge, unless they are supervised or have the person responsible for their safety.
- Clean and dry device according to the following guidelines before storage. Don't store device when the water is inside. Store device on dry and cool place, out of reach of children.

2 Description

2.1 Technical specification

Model: SAH-23005

Evaporation rate: 150-300 ml/hod

Water tank capacity: 3 litres

Dimensions (V x Š x H): 31,5 x 21 x 21 cm

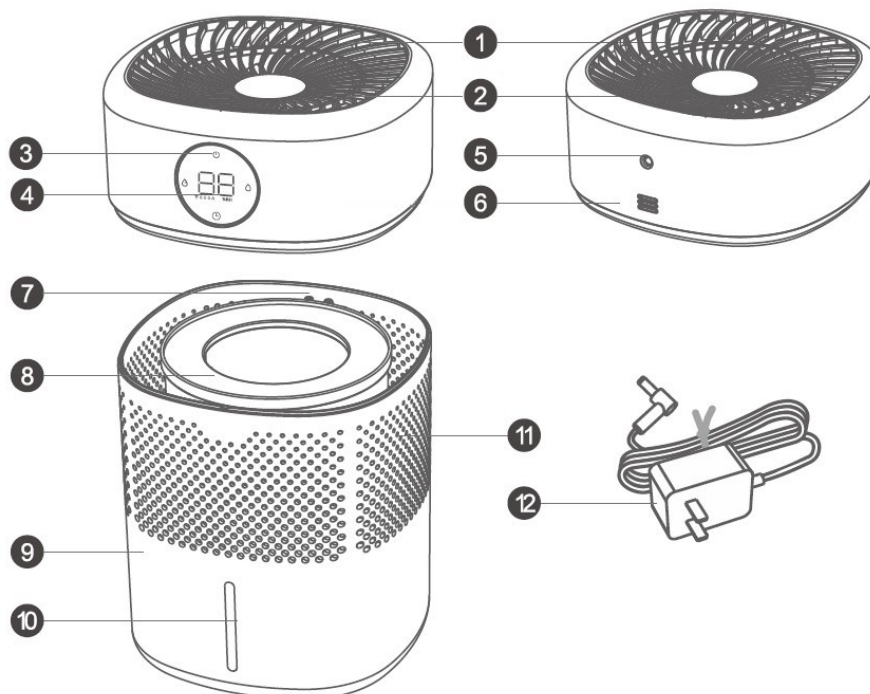
Weight: 1,6 kg without water

Noise level: < 35 dB (A)

Power supply, frequency: 220-240 V, 50/60 Hz

Total power: 5 W

2.2 Humidifier's diagram



- | | |
|------------------------|-----------------------|
| 1. air outlet | 7. water level sensor |
| 2. fan | 8. evaporative filter |
| 3. touch button | 9. water tank |
| 4. display | 10. water line window |
| 5. power adapter input | 11. air inlet |
| 6. humidity sensor | 12. power adapter |

2.3 Features and functions

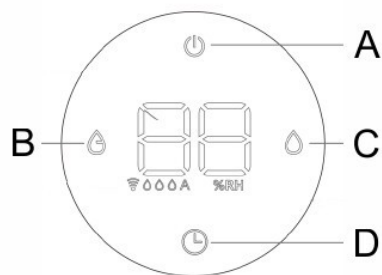
- Low energy consumption, save 85-90 percent of electricity of normal steam humidifier.
- Lack-water security protection.
- Natural evaporation for optimal humidity levels
- Possibility to set the target humidity
- Low noise

- Timer function
- LCD display
- Night mode
- Can be controlled both with the buttons on the front of the device and using the application on the mobile device.
- Easy to refill water into the water tank
- Increase and regulate relative humidity of the room air.
- Eliminate electrostatic charges.
- Prevent different diseases.
- Keep your appearance fit and protect your skin.
- Long lifetime.

3 Operation instructions

3.1 Display control

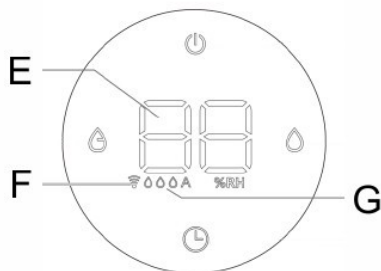
You can control humidifier with 4 buttons on display.



- A) button POWER - turn on/off humidifier
- B) button HUMIDITY - set the target humidity level
- C) button MIST - set the working mode of humidifier
- D) button TIMER - turn on/off timer

3.2 LCD display

The LCD display shows the measured value of humidity around the device and the other symbols for the different functions of the device.

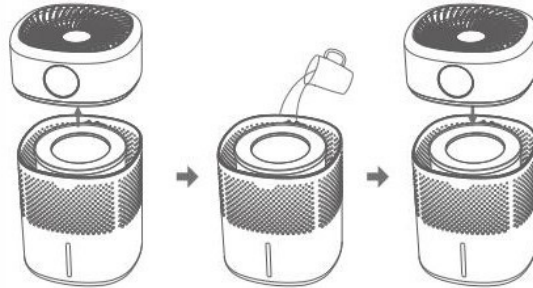





- E) relative humidity value
- F) wifi indicator
- G) working mode indicator

3.3 Getting started

Before first use, allow the device to adjust room temperature at least half an hour. The device is recommended for use in the temperature range 5-40 °C and relative humidity less than 80%.

1. Place the device on a flat surface.
2. Remove the upper part of the humidifier and fill the lower part with water (water temperature should not exceed 40 °C) up to the MAX line on the front of the humidifier. Then return the top of the device to its original position.



3. Connect the power adapter to the back of the humidifier and then connect the adapter to the power supply plugs. The device beeps once briefly and the POWER button (A) lights up on the display - the device is in standby mode.
4. Press the POWER button to start the device and the relative humidity value will appear on the display.
5. By repeatedly pressing the HUMIDITY button (B), it is possible to set the target humidity on the device, from 30% to 80% relative humidity, always in steps of 10%. To deactivate this function, press this button repeatedly until "- -" appears on the display.
6. By pressing the MIST button (C) repeatedly, one of the four operating modes can be set. The mode indicator on the display changes accordingly:
 -  - low level
 -  - middle level
 -  - high level
 - A – automatic mode – the device itself regulates the power level according to the target humidity
 - if difference between actual and target humidity is 16 % or bigger – high level
 - if difference between actual and target humidity is between 10 % and 15 % - middle level
 - if difference between actual and target humidity is between 1 % and 9 % - low level
 - if difference is less than 1 %, humidifier will switch off
7. By pressing the TIMER button for setting the timer (D), a timer can be activated on the device, which will switch off the device after the set time has elapsed. The timer can be set to 2/4/8 hours. To turn off the timer, press TIMER repeatedly until 0h appears on the display.
8. Hold down the TIMER button for 2 seconds to switch to night mode. The humidifier switches to low power and the display switches off. Only the Wifi indicator (F) will light up on the display. Press any button to reactivate the display.

9. When there is not enough water in the water tank to operate the appliance, it switches off automatically, the appliance beeps 5 times (the audible signal is not active in night mode) and the POWER button flashes on the display.

3.4 Control by mobile app (WiFi)

You can use the “Tuya Smart” application on your smartphone or tablet (iOS, Android) to control the device. Before the device can be controlled via the application, it is necessary to configure the device and allow it to connect to a WiFi network.

- The first time you turn on the device, the WiFi indicator (F) will flash quickly, indicating that the device is not connected to a WiFi network
- If you have already downloaded the application, then run it and follow the instructions in the application.
- If you have previously connected the device to a WiFi network and want to reset the settings, then hold down the MIST button for a few seconds - the WiFi indicator will flash again.

4 Troubleshooting

Trouble	Possible reason	Solution
Button POWER is light off.	Device is not connected to power socket.	Connect power adapter to device or to power socket.
	Device or power adapter is damaged.	Contact authorized service.
Button POWER is light on, after press no action.	Device is not switch on.	Switch on device with button POWER.
	Target humidity was reached.	Increase target humidity or change working mode.
Button POWER is blinking or starts to blink shortly after start.	There is no water or very little water in the water tank.	Add water to the water tank and wait for a while.
	The humidifier is not on a level surface or its upper part is not fitted correctly.	Check the location of the device and its top.
Unusual odor during operation.	First start-up of the device.	Remove the filter, pour out the water and let it stand in a cool place for about 12 hours.
	Dirty or too old water in the tank.	Clean the water tank and replace the water with a new one.
Amount of evaporated water is too small.	There is another source of humidity in the room that affects the humidifying performance of the device.	Check that the windows or doors in the room are not open or that the air conditioning is on.
	Working mode is too low.	Set a higher operating mode or increase the target humidity.

Unusual noise during operation.	Device is on an uneven surface.	Move device to a flat, smooth surface.
	Fan is blocked by some object.	Switch off device, try to remove object from fan.
	Device is faulty.	Contact authorized service.
Ambient humidity is too high.	Humidifier operates in continuous mode.	Change working mode.
	Target humidity is too high.	Change target humidity.

WARNING!

Should up mentioned solutions do not work please contact the manufacturer or agent. Never disassemble, repair or restructure the device.

As faulty is not considered the following :

1. The humidity sensor has its accuracy, see. technical specification (2.1), therefore the measured humidity value may differ by up to 10% when compared at the same place with another measuring instrument.
2. The device works on the principle of natural evaporation - this means that the humidifying power of the device depends not only on the set operating mode, but also on the ambient temperature, humidity and air circulation in the room. It is true that the evaporating power decreases with increasing humidity.
3. The device operates quietly, but not completely noiseless. Noise less than 35 db is not considered as defect.

5 Maintenance

NOTICE!

- Before each maintenance operation, switch off the device and disconnect it from the power adapter.
- Never touch the power adapter or the unit with wet or damp hands.
- If you will be pouring water from the base of the humidifier, we recommend doing so above a bathtub or other larger container, as the water will also flow out through the round holes in the walls of the base.

How to clean the base unit (water tank):

1. We recommend cleaning the base at least once a week.
2. Remove the top of the appliance and pull the evaporative filter out of the base.
3. Clean the base with a soft cloth and water and also use vinegar if the base is covered with water dirt (limescale).
4. If there is water dirt on the level sensor, clean it with a brush.

How to clean evaporative filter:

1. The evaporative filter can be cleaned of trapped dirt under running water.

2. The service life of the evaporating filter ranges from 1 to 6 months depending on the hardness of the water and the frequency of use of the device.
3. If the evaporative filter can no longer be cleaned or the evaporating capacity of the appliance seems to have dropped significantly, we recommend replacing the filter with a new one.

If you will not be using humidifier for a long time, then remove evaporative filter from the appliance and let it dry thoroughly. Drain the water from the appliance and let the whole appliance dry thoroughly. Then return dry filter to the appliance.

6 Disposal of the device (environment)



At the end of the product lifecycle, you should not throw this product into the normal household garbage but bring the product to a collection point for the recycling of electrical and electronic equipments. The symbol on the product, user guide and/or box indicate this. Some of the product materials can be re-used if you bring them to a recycling point. By reusing some parts or raw materials from used products you make an important contribution to the protection of the environment. Please contact your local authorities in case you need more information on the collection points in your area.

This product is in compliance with the essential requirements and other relevant provisions of Directive 89/336/EEC. The device was approved for use in EU countries, therefore, bear the CE. All necessary documentation is available at the importer address.

Changes in technical parameters, properties, printing errors in the instruction manual reserved.

EU Importer:
Bibetus s.r.o.
Loosova 262/1
Brno 638 00
Czech republic
E-mail: info@bibetus.cz
Tel: +420-544214627