

Aromatherapy diffuser

Airbi CANDY



Instruction manual

(version 1.0)



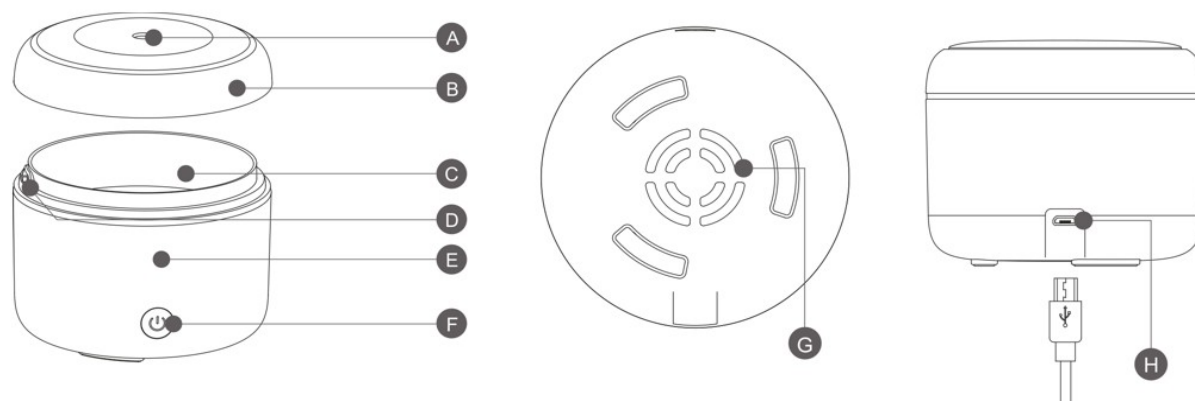
Please read the instruction manual carefully before using this appliance!

Important safety instructions

Please read through the operating instructions carefully before you use the appliance for the first time and keep them safely for later reference. If necessary pass them on to the next owner.

1. The appliance is only to be used in the home for the purposes described in these instructions. Unauthorised use and technical modifications to the appliance can lead to danger to life and health.
2. This appliance can be used by children aged from 10 years and above and persons with reduced physical, sensory or mental capabilities or lack of experience and knowledge if they have been given supervision or instruction concerning use of the appliance in a safe way and understand the hazards involved. Children shall not play with the appliance. Cleaning and user maintenance shall not be made by children without supervision.
3. After unpacking, make sure that diffuser wasn't damaged during transport. If you find any damage, contact your dealer as soon as possible. We recommend you keep the packaging for possible future use .
4. Before first use check that the device parameters (electric voltage, etc.) correspond to local conditions.
5. Do not inhale!
6. Use appliance in an environment of 10°C to 30°C. Do not use outdoors.
7. Do not place the appliance near a heat source. Do not subject the power cord to direct heat (such as a heated hotplate, open flames, hot iron sole plates or heaters for example). Protect power cords from oil.
8. Always put the diffuser on a hard, flat horizontal surface, at least 15cm from the walls and away from any source of heat such as burners, radiators etc. The diffuser cannot operate on a surface that is not horizontal.
9. Before using the diffuser, check if AC adapter or power cord is not damaged. Do not use it if the cord is damaged.
10. If the power cord is damaged, it must be replaced by the manufacturer or a repair shop authorized by the manufacturer or by similarly qualified persons in order to avoid a hazard
11. Only use tap water.
12. Don't exceed the maximum water level. Always put the water before essential oils. Never use pure essential oils without water. Put some essential oils (1-2 drops). Too much drops may damage the unit.
13. Continued use of the diffuser in the long-term damage to the product and shorten its life.
14. Unplug the unit before any manipulation such as cleaning of filling for example. Always empty the tank when the unit is not in use.
15. Do not remove the cover of the diffuser when the unit is running.
16. Refill frequently the water in the tank to prevent any dirt that could damage the unit.
17. Clean the water tank every week. Do not use any chemical products (acids,...) or corrosive product to clean the device.
18. In case of splashing water in the circuit, remove the diffuser immediately and let it dry in the open air for at least 3 days.
19. Store the appliance in a dry place inaccessible to children (pack the appliance).
20. Only use fragrances, aromas or essential oils that do NOT contain alcohol. Alcohol can damage the appliance. Appliances that are damaged by such additives are not covered by the warranty.
21. Manufacturer is not responsible for any damage due to improper use of appliance.

Diffuser's scheme

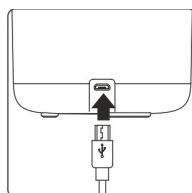


- A) Mist nozzle
- B) Upper cover
- C) Water tank
- D) Air outlet

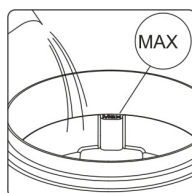
- E) Base
- F) Button on/off
- G) Air inlet
- H) Power connector

Operation instruction

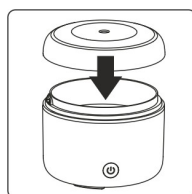
1. Please insert the power cord jack into the power connector (H) on the back of the appliance



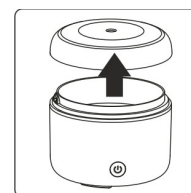
3. Fill the water tank with tap water to the maximum level.



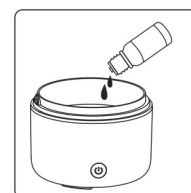
5. Place the upper cover on the base. Please make sure it fits perfectly.



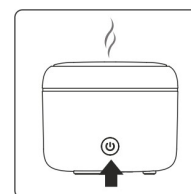
2. Position the unit on a flat and hard surface. Remove the upper cover (B) from the water tank (C).



4. Add 1-2 drops of essential oils into water. Always fill in water before you add in essential oil.



6. Plug in power adapter to socket and turn on the appliance using button on/off (F).



Button on/off

1. First press – Turn on appliance, 7 color rotating LED light
2. Second press – Stops light rotation, light stays on 1 color
3. Third press – Turns off light
4. Fourth press – Turn off appliance

Notice

The appliance switches itself off as soon as the water in the water tank is almost empty. The amount and intensity of produced mist vary, but this is not unusual and should not be considered as a fault. If you want to use a different kind of essence, always clean water tank properly.

Product care and maintenance

1. Before any cleaning operation, switch the appliance off and unplug it.
2. Clean the water tank with water and vinegar on a soft cloth regularly.
3. Please don't clean the product with thinner, gasoline and cleanser.
4. Please pour away the water when in no use.
5. Keep dry when in no use to avoid bacterial and mildew (fungus).
6. Never immerse the unit in water or let water enter the air outlet or any other openings.

Problems and solution

When you switch on appliance, it will switch off in 1 second.

- check water tank if there is water or not
- check if AC adaptor is connected correctly

Without mist spray or abnormal mist spray.

- check water tank if there is water or not, also check if water is under max. line
- clean water tank
- check air inlet and clean it from dust

Water leakage.

- check if upper cover is placed correctly
- check ambient temperature and humidity (too low temperature or too high humidity may lead to mist get easier together and form water drops)

Technical specifications

Power supply (input): AC100-240V 50/60 Hz
 Power supply (output): DC 5V
 Rated power: 5 W
 Product size: diameter 95 mm, height 79 mm

Product weight: 135 g
 Water level: 100 ml
 Suitable area: 10-15 m²
 Complies with EU regulations: CE, EMC, WEEE

Disposal of the device (environment)

The European directive 2012 / 19 / CE on Waste Electrical and Electronic Equipment (WEEE), requires that old household electrical appliances must not be disposed in the normal unsorted municipal waste stream. Old appliances must be collected separately in order to optimize the recovery and recycling of the materials they contain and reduce the impact on human health and the environment. The crossed out “wheeled bin” symbol on the product reminds you of your obligation, that when you dispose of the appliance it must be separately collected. Consumers should contact their local authority or retailer for information concerning the correct disposal of their old appliance.



This product is in compliance with the essential requirements and other relevant provisions of EMC directive 2014/30/EU. The device was approved for use in EU countries, therefore, bear the CE. All necessary documentation is available at the importer address.

Changes in technical parameters, properties, printing errors in the instruction manual reserved.

Importer address:

Bibetus s.r.o.

Loosova 262/1

Brno 638 00

Czech republic

E-mail: info@bibetus.cz