

Ultrasonic humidifier

Airbi AROM



Instruction manual

(version 1.0)



1 Before first use

1.1 Why humidify the air?

Stay in heated rooms can be not only unpleasant, but also unhealthy. One of the main reasons is low humidity. Optimal humidity is between 40 and 60%, while in many of our homes humidity drops below 20% in winter.

What does low humidity cause? Dust particles, bacteria, viruses, dust mite feces are normally trapped by nasal mucosa and exhaled. However, due to dry air, these particles can reach the lungs and reduce the body's natural defenses. This overloads the immune system and can cause irritation of the mucous membranes, cough, cracked lips, and increases the risk of illness.

Airbi ultrasonic humidifiers are ideal for apartments, offices, and any place where low humidity can cause health problems. Ultrasonically produced vapor is harmless to health. The main advantages of ultrasonic humidifiers are high performance and low energy consumption.

1.2 Principle of ultrasonic humidifier

Ultrasonic humidifiers use a high-frequency ultrasonic oscillator to break up water into tiny particles with a diameter of about 1–5 μm . The ventilation system blows these water droplets into the dry air, where they evaporate and increase the humidity. A smooth and visible mist can be seen coming from the unit.

1.3 Security instructions

- Read this user manual carefully before using the device.
- Keep this manual for future reference.
- After unpacking, make sure that the humidifier wasn't damaged during transport. If you find any damage, contact your dealer as soon as possible. We recommend you keep the packaging for possible future use.
- Before first use, check that the device parameters (e.g., voltage) correspond to local conditions.
- Always place the humidifier on a hard, flat horizontal surface, at least 15cm from the walls and away from any source of heat such as burners, radiators, etc. The humidifier cannot operate on a non-horizontal surface. The humidifier must not be tilted.
- Keep the humidifier out of reach of children. Do not allow children to play with it.
- Before using the humidifier, unwind the cord and check that it is not damaged. Do not use it if the cord is damaged.
- Do not plug or unplug the humidifier with wet hands.
- Keep the base unit, power cord, and power supply away from water. Do not use in wet locations.
- Never disassemble the base unit.
- Never operate the humidifier with a defective plug or cord, or after any malfunction or damage of any kind. In these cases, have the appliance checked by nearest authorized dealer or repair center for safety check and any necessary repairs or adjustments.

- Do not shake the humidifier. This could spill water into the base unit and affect its operation or cause damage.
- Do not leave the humidifier in the direct sunlight for a long period.
- If an unusual odour occurs during use, turn off the appliance, unplug it and have it checked by qualified personnel.
- Unplug the humidifier before cleaning, filling with water or if removing the tank.
- Never touch the water or the immersed components while the appliance is operating.
- Never turn on the humidifier without water in the tank.
- Never scratch the transducer.
- To prevent any damage to the components, do not allow water to enter the base unit.
- Never wash the entire base unit with water; do not immerse the base unit.
- The ultrasonic humidifier must be cleaned regularly. To do this, refer to and follow the cleaning instructions in this manual .
- Do not use the humidifier if the air in the room is already sufficiently moist (more than 60% relative humidity). Excessive humidity can cause condensation on cold surfaces or walls in the room.
- For indoor use only!
- This device is not intended for use by persons (including children) with reduced physical, sensory, or mental capabilities, or lack of experience and knowledge, unless supervised or instructed by a person responsible for their safety.
- Clean and dry the device according to the following guidelines before storage. Do not store the device with water inside. Store the device in a dry, cool place, out of reach of children.
- The device must not be controlled by an external switch. Danger of overload, short circuit, or fire!
- Please wash your hands after cleaning of the device, especially the filter. Do not touch your face or eyes during maintenance.
- Do not inhale mist directly!
- The water tank must be covered by the lid while the device is running.
- Protect the power cord from oil.
- Use only 100% natural essential oils, without alcohol. Alcohol must be avoided, because it can cause damage to the device. Appliances damaged by alcohol or chemicals are not covered by the warranty.
- Do not exceed the maximum water level. Always pour in water first, apply small amount of essential oil later (start with 1–2 drops). Using too many drops of essential oil may damage the device. Never apply essential oil without water!

2 Description

2.1 Technical specifications

Model: BZT-706

Evaporation rate: 230 ml/h (± 30 ml/h)

Water tank capacity: 2.5 L

Noise level: < 35 dB(A)

Power supply: 220-240 V

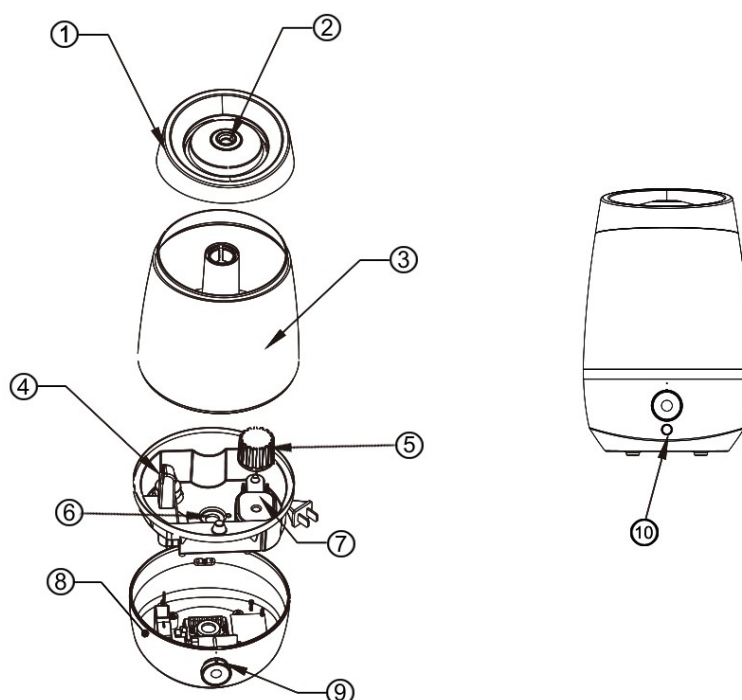
Frequency: 50/60 Hz

Total power: 15W

Dimensions: 176 x 176 x 280 mm

2.2 Humidifier's diagram

- 1 – cover lid
- 2 – output nozzle
- 3 – water tank
- 4 – air outlet
- 5 – filter
- 6 – transducer
- 7 – water level sensor
- 8 – base unit
- 9 – switch button
- 10 – light switch



2.3 Features

- Low energy consumption, saves 85–90% of the electricity compared to a standard steam humidifier.
- Low-water safety protection.
- Releases abundant negative ions, promotes cellular metabolism, increases vitality and appetite, purifies the air, and soothes nerves.
- Easy to refill water into the water tank
- Increase and regulate relative humidity of the room air.
- Eliminate electrostatic charges.
- Prevent different diseases.
- Keep your appearance fit and protect your skin.
- Night light.

3 How to use

Before first use, allow the device to adjust to room temperature for at least half an hour. The device is recommended for use within the temperature range 5–40 °C and at a relative humidity of less than 60%.

Check the base unit (8) of the humidifier and make sure that it is clean.

Remove the cover lid (1) and fill the water tank with clean water (the water temperature must not be higher than 40 °C). Do not exceed the water level indicated by the line and the 'Max' sign.

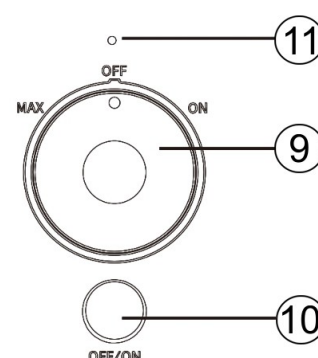
Attention! The appliance must be switched off and unplugged from the electricity while filling the water tank!

You can add essential oil to the water tank. The amount depends on the desired intensity of the scent. We recommend starting with a small amount of drops (1–2) and adding more if needed. Be careful: too much essential oil can damage to the device. The essential oil must be 100% natural, without alcohol or chemical additives, as these can damage the water tank surface or other parts of the device. Always add essential oil into the water; never drop it into an empty tank!

When the water tank is full, close it with the cover lid (1). Never operate the humidifier with the water tank open.

Wait for a moment while the water fills the bottom chamber. Never turn on the device if the bottom chamber is empty. Plug the power cord into the socket and turn on the humidifier by rotating the switch button (9) clockwise. When you reach the ON position, you will hear a click. If the water level is sufficient, the light indicator (11) will turn green, and a visible stream of tiny droplets will emit from the output nozzle (2).

If the water level is insufficient, the light indicator will turn red and the device will not operate. You can adjust the output by turning the switch button clockwise towards the MAX sign and counterclockwise back towards the ON sign. Turning the switch to OFF will switch off the device.



9: switch button
10: light switch
11: light indicator

When the humidifier is on, the water tank lighting is also activated. The container will be illuminated blue, and then the backlight will automatically cycle through the following colors: blue, green, purple, yellow, cyan, red and white. Press the light switch (10) to stop the color change. The water tank will remain illuminated in the color that was active when you pressed the switch. Press the light switch again to switch off the backlight. If necessary, you can switch it back on by pressing the light switch again, the colors will then alternate as they did when you first turned the unit on.

4 Troubleshooting

Trouble	Possible reason	Solution
Light indicator off, humidifier does not work	No power supply	Connect power supply, switch on
Light indicator red, no mist outlet	No water in water tank	Fill water into water tank
Abnormal smell in mist	New unit	Remove the water tank, open the cover, and let it stand for 12 hours in a cool place.
	Dirty water or long time staying water	Clean the water tank, and fill it with clean water.
Water tank is broken		Contact authorized service

Too little mist emitted	Too much limescale or dust in the water chamber	Clean transducer
	Water is too dirty or too old	Clean water tank, change to fresh clear water
Abnormal noise	Resonant water tank when the amount of water is too small	Fill water into water tank
	Unit is on an unstable or tilted surface	Move the unit to a stable flat horizontal surface

This is not considered to be a malfunction:

- If use too hard water in humidifier white coating of sediment may appear in the room. This is not malfunction. Please use soft water.
- Gurgling sounds from the water near the humidifier are normal.
- The device operates quietly, but not completely noiseless. Noise below 35 db is not considered a defect.

WARNING!

Should up mentioned solutions do not work please contact the manufacturer or agent. Do never arbitrarily disassemble, repair or restructure the apparatus.

5 Maintenance

It is recommended to clean the water tank and filter at least one once every 3 days. It is advisable to clean them more frequently, if a layer of impurities forms on the surface of these parts or if the appliance stinks.

Before carrying out the maintenance, please switch off the appliance and disconnect it from the power supply. Never clean the humidifier with thinner, gasoline, or other harsh chemicals.

The filter should be replaced at least once every 3 months.

If the water used is too hard (contains too many minerals), a “white coating” may form on the transducer, in the water chamber, or in the water tank. Too much of this contamination can prevent the instrument from functioning properly.

We recommend:

1. Use filtered or distilled water.
2. Change the water more often to keep it fresh.
3. Clean the whole unit, and make sure to keep all parts of the unit dry completely when the unit is not in use.

How to clean the water tank and filter:

1. Remove the water tank from the appliance, open it and pour out any remaining water.
2. You can wipe the tank with a clean damp cloth. Rinse it with clean water and wipe it with a cloth.

3. Unscrew the filter basket and remove the foam filter. Rinse both parts thoroughly with clean water. Shake off excess water from the basket and the filter. You can also clean the filter basket with a soft brush. Screw the cleaned filter and basket back into the dry container.

How to clean the water converter:

1. Pour 5-10 drops of vinegar or citric acid solution on the transducer and wait 2-5 minutes.
2. Gently use a soft brush to clean the transducer.
3. Rinse the transducer with clean water. Be careful not to allow water to flow into the air outlet.

How to clean the base unit:

1. Clean the base unit with a soft cloth and also use vinegar if it is covered with water impurities (limescale).
2. If there is limescale on the water level sensor, use vinegar and clean it with a brush.
3. Rinse the bottom with clean water. Be careful not to allow water to flow into the air outlet.

6 Disposal of the device (environment)

At the end of the product lifecycle, you should not throw this product into the normal household garbage but bring the product to a collection point for the recycling of electrical and electronic equipments. The symbol on the product, user guide and/or box indicate this. Some of the product materials can be re-used if you bring them to a recycling point. By reusing some parts or raw materials from used products you make an important contribution to the protection of the environment. Please contact your local authorities in case you need more information on the collection points in your area.



This product complies with EU regulations CE, RoHS. The device has been approved for use in EU countries, therefore it has the CE mark. All necessary documentation is available from the importer of the device.

Changes in technical parameters, properties, printing errors in the instruction manual reserved.

Importer address:

Bibetus s.r.o.

Loosova 262/1

Brno 638 00

Czech republic

E-mail: info@bibetus.cz

Tel: +420 544214627